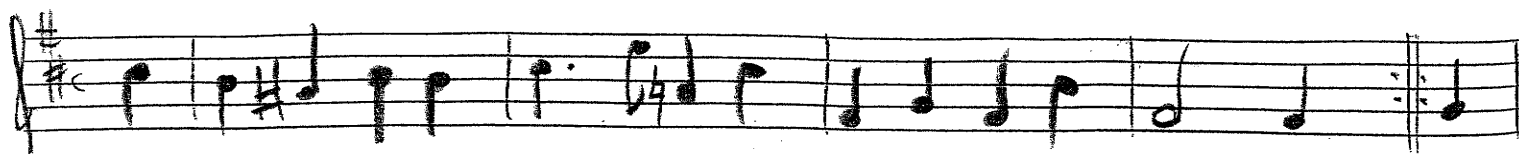


Thema

d=40

②

④



p / wdh. pp

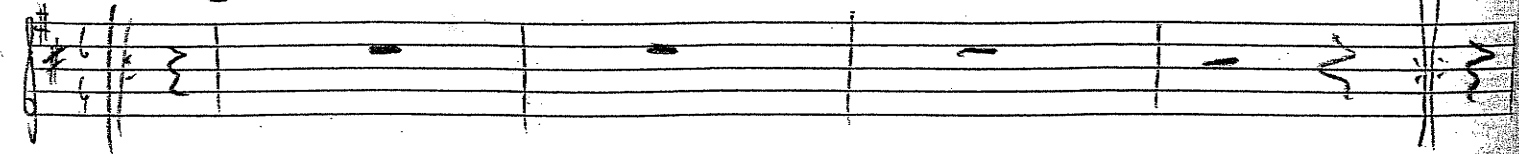


mp

d=48

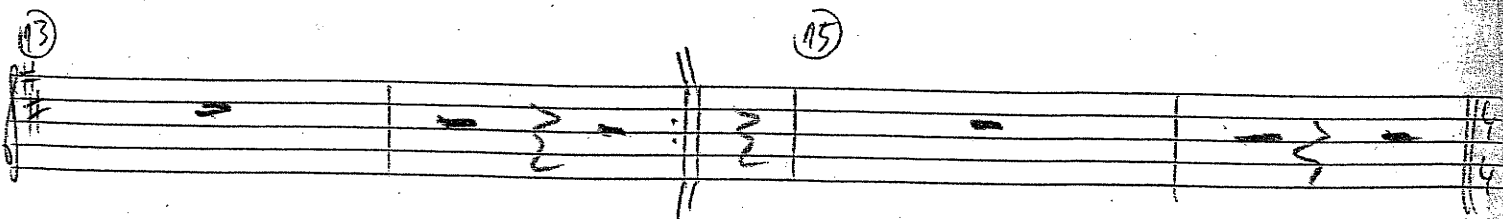
⑧

⑪



mp / wdh. p

mf
wdh. mp

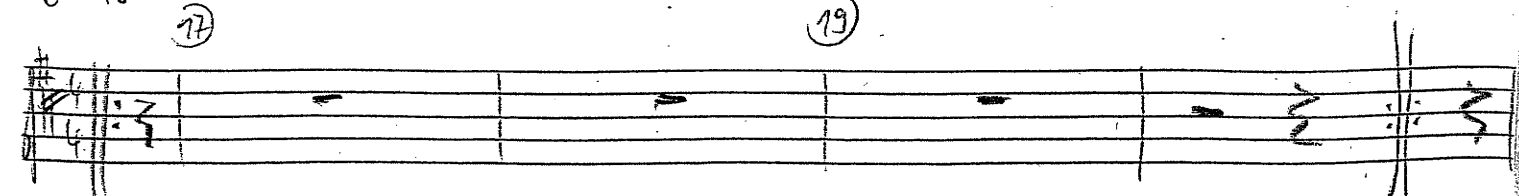


mf

d=48

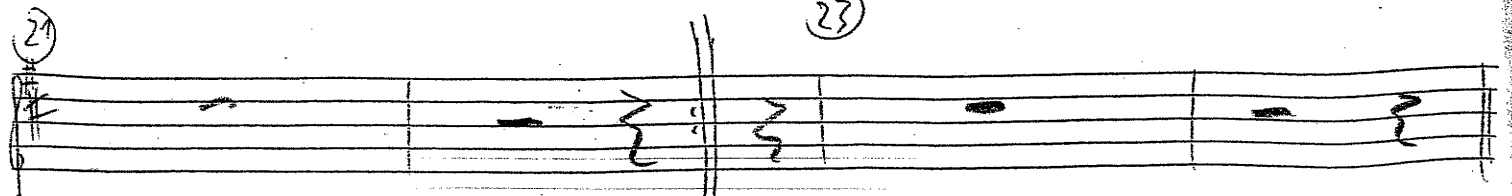
⑰

⑲



mf / wdh. mp

f
wdh. mf

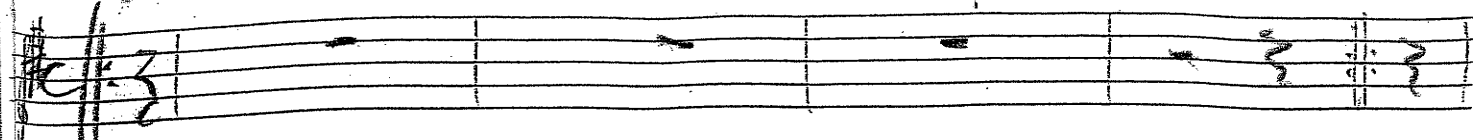


f

S. 2

d=57 ⑳

㉓



f / wdh. mf

ff
wdh. f



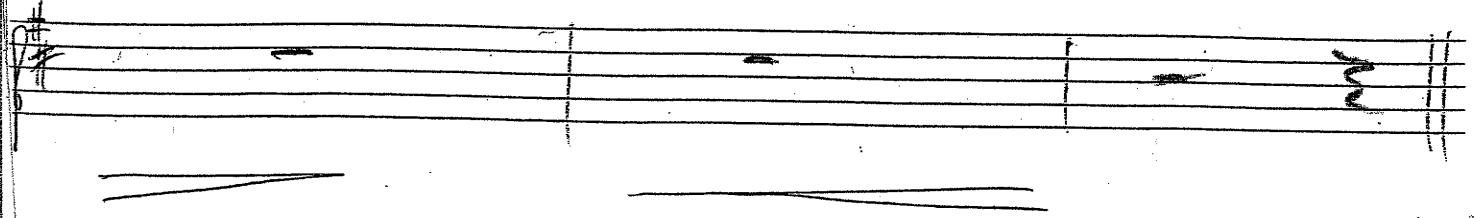
㉓

㉓

f

㉓

㉓ rit.



Jetzt folgt noch 1x Thema (Takt 1-9)
oder Choral im Bachstil

①

③

⑤



mf / wdh. mp

f



mf

S. 2