

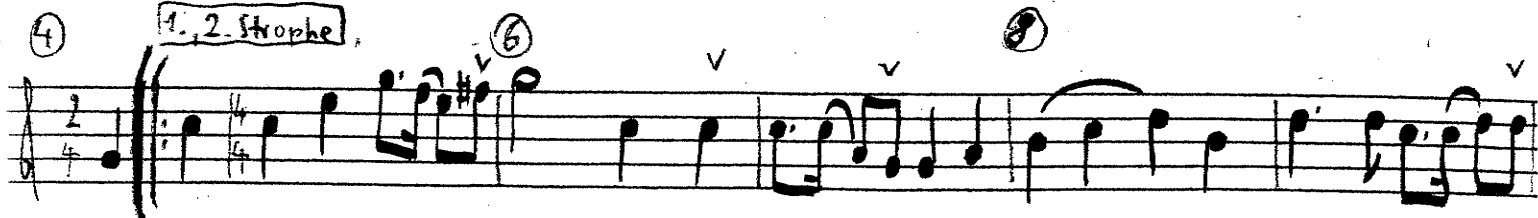
• Fassung ohne Gesang: ohne Wdh. • alles legg.

Vorspiel



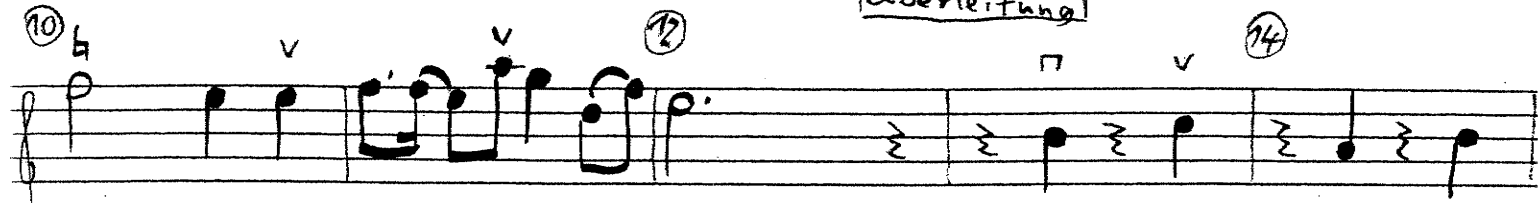
mp
ohne Fl. bis T. 3

1. 2. Strophe



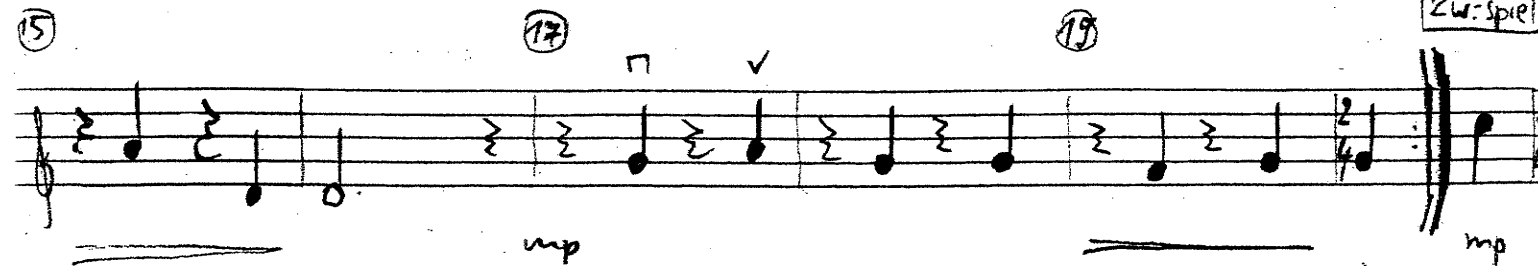
mf
L + Fl.

Überleitung



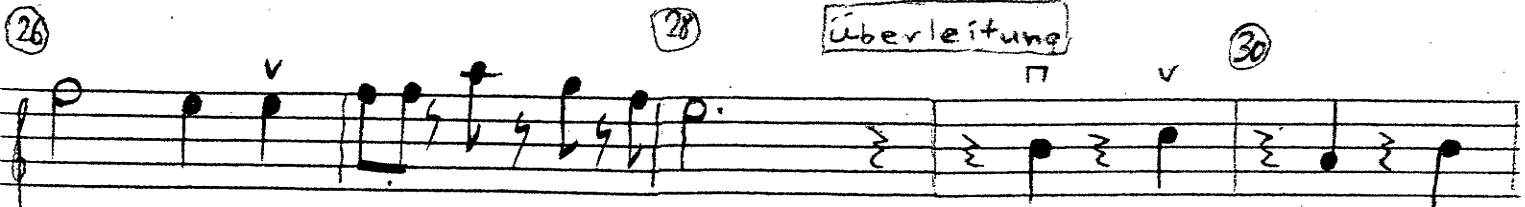
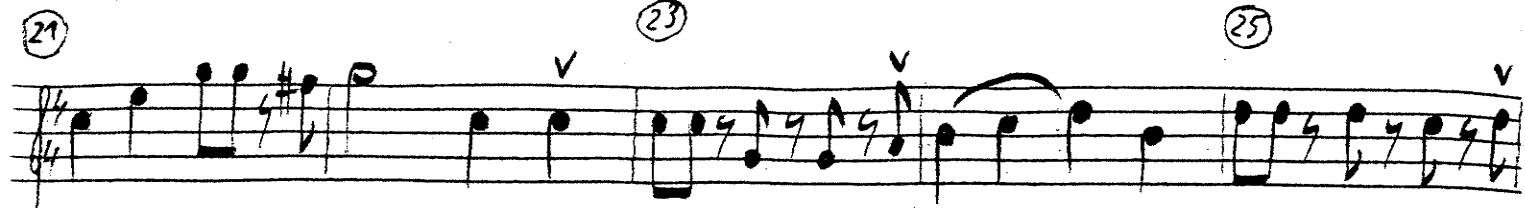
ohne Fl. bis T. 35

Zw. Spiel



mp

mp



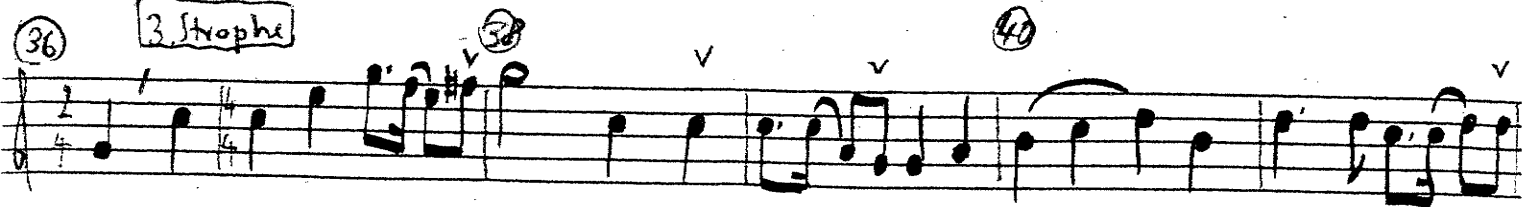
Überleitung

ohne Fl. bis T. 35



mp

3. Strophe



L + Fl.

