

Partitur

Just A Closer Walk With Thee (Nur ein engeres Gehen mit dir)

zum Lied s. S. 10

irisches Volkslied / M. Apitz
(geistlich)

für Sologesang (mittlere Lage) (Chor ad lib.)

+ Orchester in variabler Besetzung:

Reicher, Holz-, Blechbläser (auch Sax-satz)

+ Klavier ad lib.

• auch Fassg. Gesang / Orgel (kl.) ohne Orch. mögl.

• " " Vl. (o.ä.) / " " " " "

Partitur

Besetzung

Sologesang (mittlere/tiefe Lage) / VI. Ia (in Verbindg. mit VII Ia)

Tr. I (Klar. I) / Sax I (Sopr.-S.)

" II (" II) / " II (Alt-S.)

TenorPos. / Fl. / " III (Tenor-S.)

Baß-Pos / " IV (Bariton-S.)

Solo-Vc. (s. Kl. f. Vor- u. Zw.-Spiel)

VI Ia = Mel. 1-5 Spieler (evtl. auch Fl...)

VI Ia (2 Stimmen) nur bei Fassg. ohne Gesang

VI Ib

VI II

VI III; besser Viola (s. T. 90)

Kl. (Solo-Vc)

Git.

Vc (Tutti)

Fassg. Gesang (Kl. (ohne Orch.) mögl.)

" " Orch. (ohne Gesang) "

Kl.

in der Art eines
Teilklavierans-
zuges
(Begleitsatz)

• *alles legg.* • *nicht triolisch*

Vorspiel

2

4

tacet

Streicher ad. lib.

Solo - VI. o. a.

VI. II - III (e hⁿ)

A H⁷ E D⁷ A

A. K. b.

3.4

5) 1, 2. JK. (7) *binweise* → *F. VI. Ia* (Fasss. ohne Gesang) (17)

1. Just a closer walk with Thee
2. I am weak and Thou art strong,
Grant it Jesus if you please,
Savior, keep me from all wrong.

tacet

vi. II = III (1, 2, 3)

A F#m F#7 Hm Hm E7 E7 D7 A A

13) Refr. *binweise* → *F. VI. Ia* (Fassg. ohne Gesang) (17) (19)

Daily walking close to Thee; let it be, dear Lord let it be.

vi. I = II

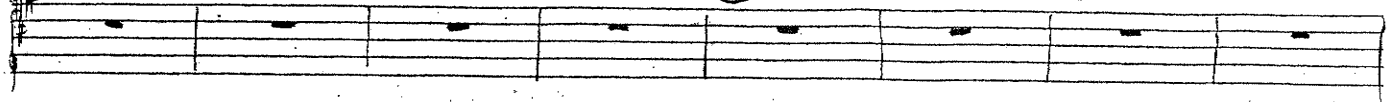
A E A A7 D D H7 A E D A A

21 Zw.-spiel

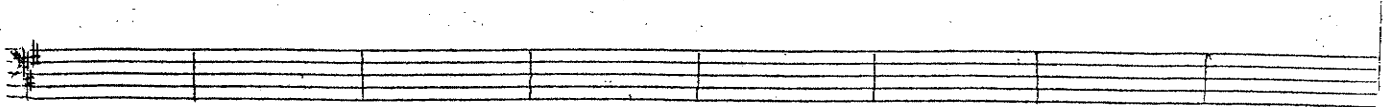
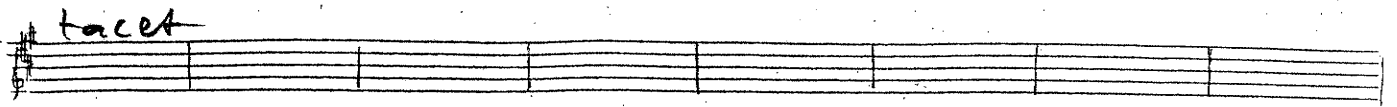
23

25

27



tacet



Streicher ad. lib.

vi. II = III (cis^o)

Handwritten musical score for measures 21-27. It consists of three staves. The top staff contains a melodic line with various ornaments and fingerings (e.g., 3 7, 2 2, 3 7, 2 2, 0 3). The middle staff contains a bass line with notes and rests. The bottom staff contains a bass line with notes and rests. Chords are indicated below the middle staff: A, F#m, F#², Hm, Hm, E⁷, E⁷, D⁷, A, A. Dynamics include mp and v.

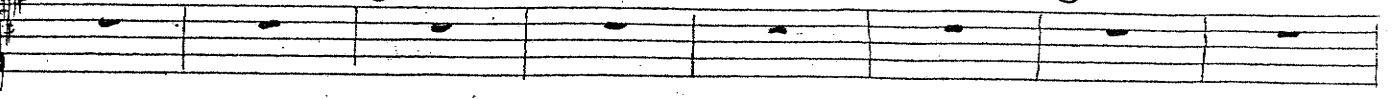
Lvc. a = b (ganzes Zw.-sp.)

29

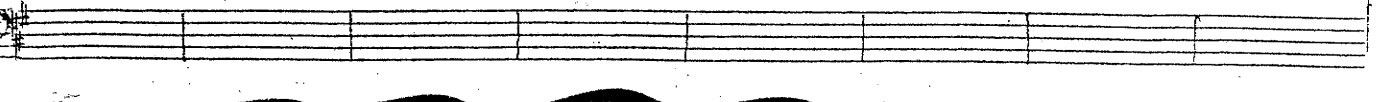
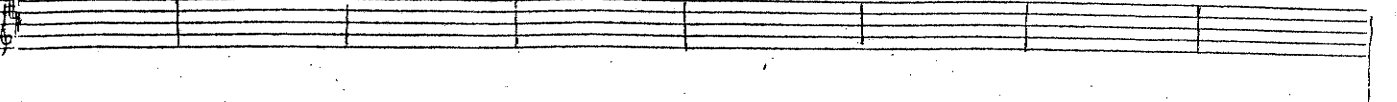
31

33

35



tacet



vi. I = II (cis^o)

Handwritten musical score for measures 29-35. It consists of three staves. The top staff contains a melodic line with ornaments and fingerings (e.g., 2 3, 12^v, 3 7, 7, 2). The middle staff contains a bass line with notes and rests. The bottom staff contains a bass line with notes and rests. Chords are indicated below the middle staff: A, E, A, A⁷, D, D, H⁷, A, E, D, A, A. Dynamics include mf and v.

Hinweise f. VI. Ia m
(Fassg. ohne Gesang)

37 3. 4. J. K.

39

47

53

Musical notation for vocal line, measures 37-53.

In this world of toil and snares,
When this feeble life is o'er,

If I fall, Lord, who cares?
Pain and sorrow be no more.

Empty musical staves with a 'tacet' marking.

Accompanying piano part for measures 37-53, including chords and dynamics.

Musical notation for vocal line, measures 45-57, including lyrics: 'Daily walking close to Thee; let it be, dear Lord let it be.'

Accompanying piano part for measures 45-57.

Accompanying piano part for measures 45-57, including chords and dynamics.

53 Zw.-spiel

55

57

59

57

tacet

Steiche ord. lib.

61

63

65

67

tacet

69 5. J.K.

71

73

75

mp Just a closer walk with Thee, Grant it Jesus if you please.

tacet

mp

mp

A F#m F#m Hm Hm E7 E7 D7 A A

77 Ref.

79

81

83

mf Dawling walking close to Thee; Let it be, dear Lord let it be.

mf

A E A A7 D D H7 A E D A A

mf