

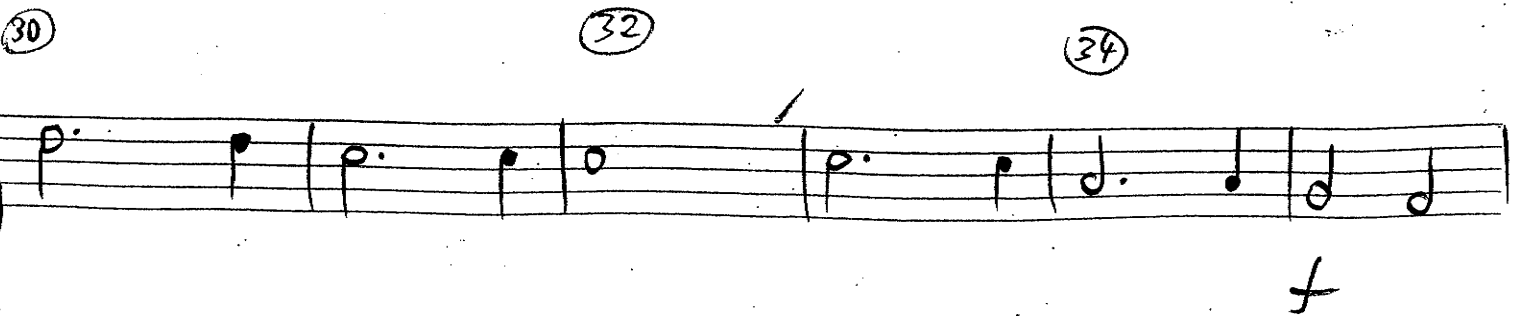
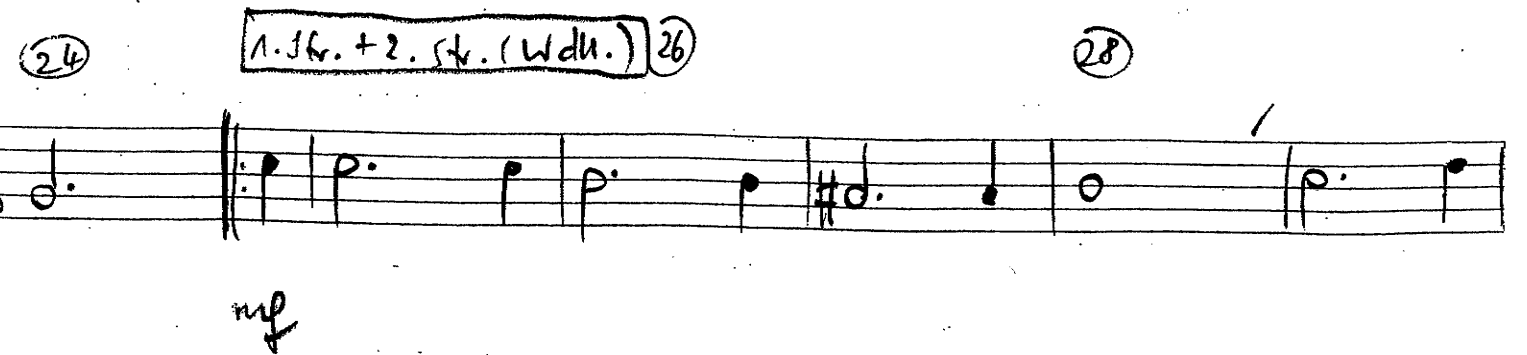
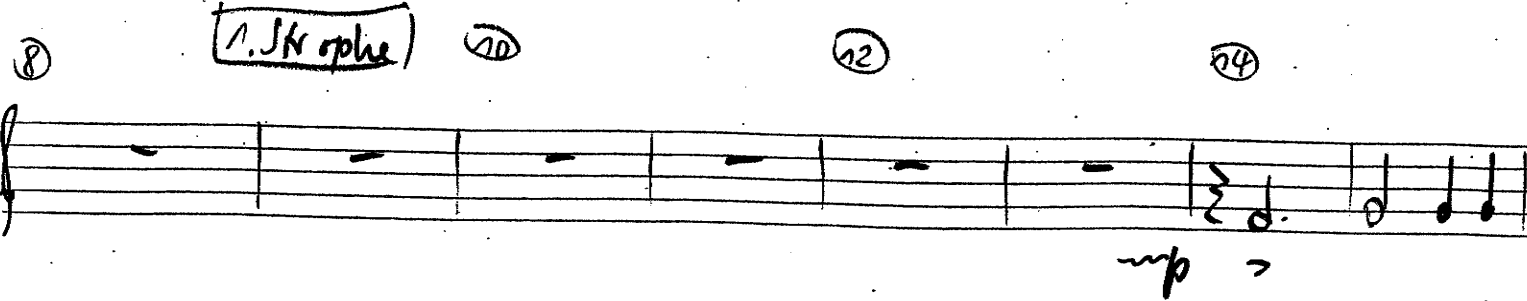
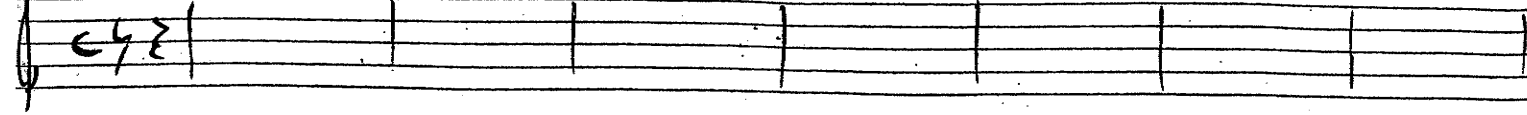
S. 1 Schreihals

M. Apitz (T.: W. Busch)

• Legg nicht kriechlich • gehend

Tenor-Pos. (7P.)

Vorspiel *tar cet*

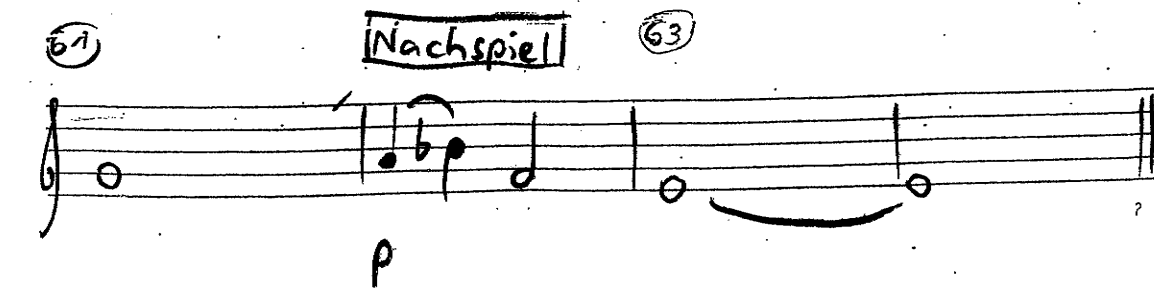
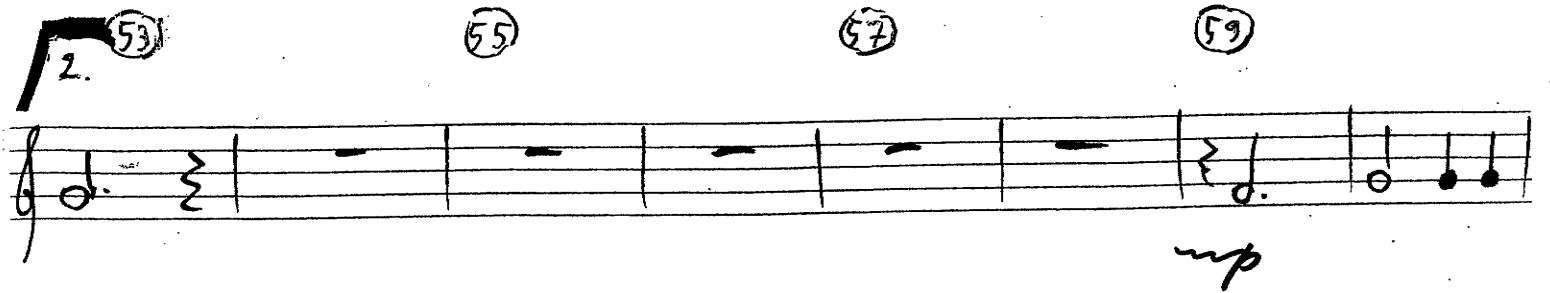
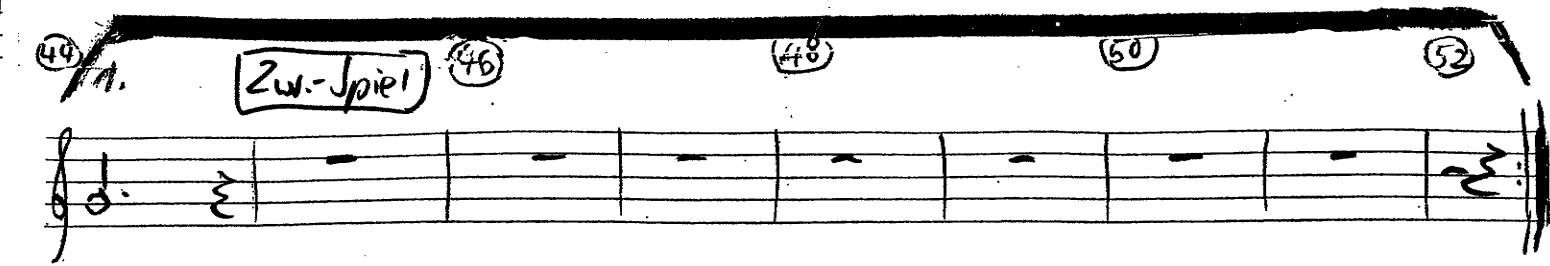
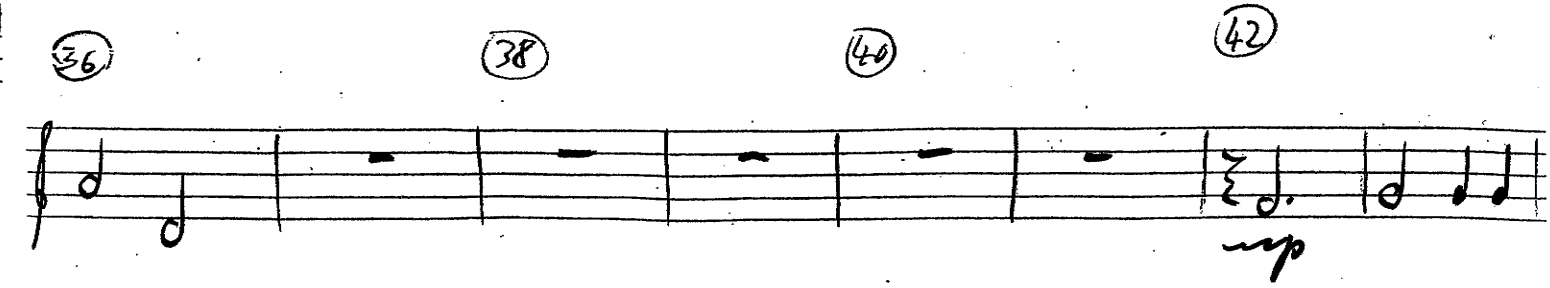


S. 2 Schreihals

Tenor-Pos. (7P.)

Schreihals

Tenor-Pos. (7P.)



Schreihals

Tenor-Pos. (7P.)