

Es lebe die Mode

= Nr. 2 im Zyklus "Knochenberg ruft erwacht" (Ringelnetz / Spitze)

legg.  $\text{tr. II} = 1 \frac{1}{2}$

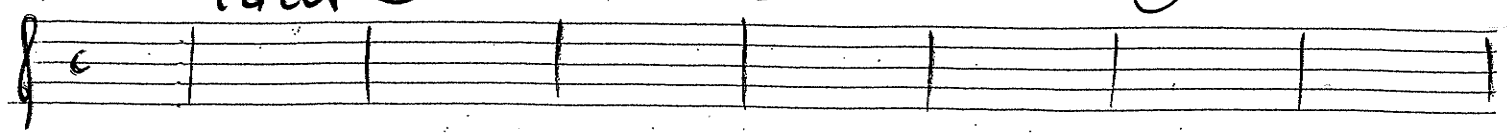
Tr. II in C

vergl. Tr. II in B

Vorspiel **tacet** ②

④

⑥



Ref.

⑧

⑩

⑭

⑰

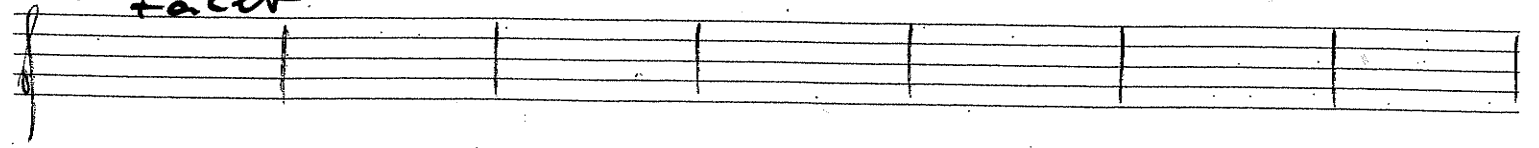


1. H. **tacet**

⑪

⑲

⑳



Ref.

⑳

㉓

㉖

㉘

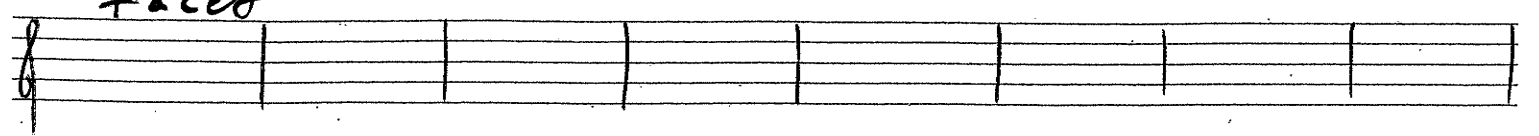


Zw.-spiel **tacet**

㉔

㉗

㉙

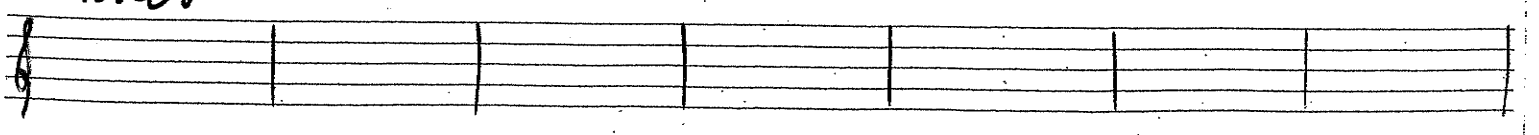


**tacet**

㉕

㉚

㉜



Es lebe die Mode

Tr. II in C

Es lebe die Mode

Tr. II in C

1. 2

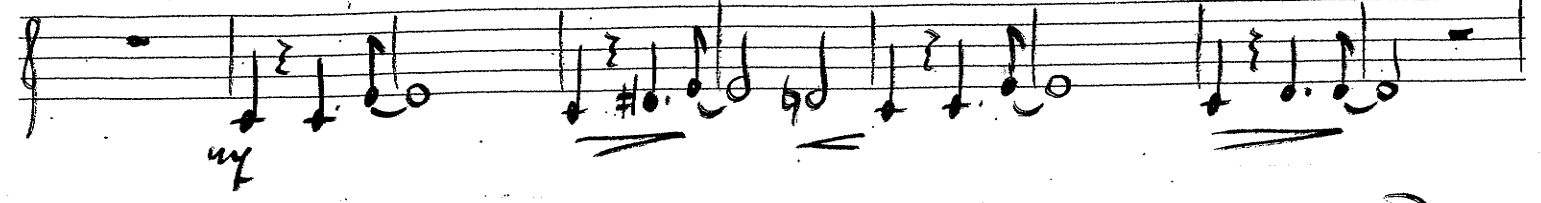
④⑧

Ref.

⑤⑨

⑤⑩

⑤⑭



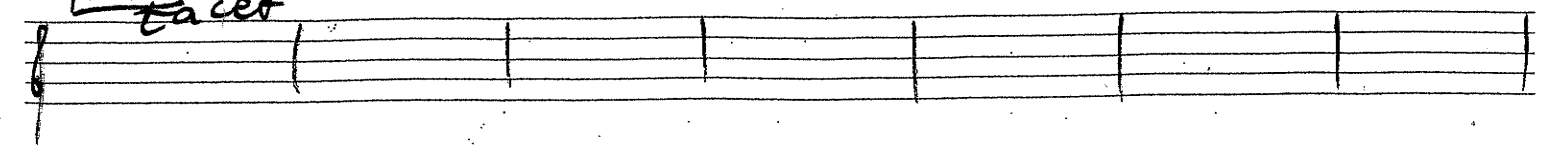
⑤⑦

2. H. **tacet**

⑤⑨

⑥⑰

⑥⑳



⑥④

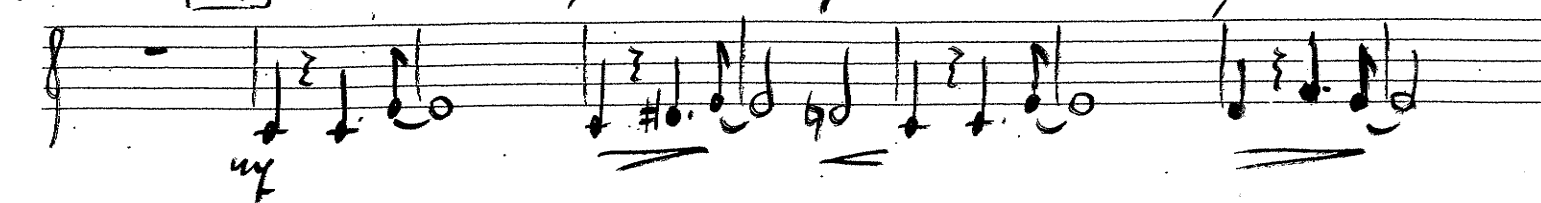
Ref.

⑥⑥

⑥⑧

⑦⑩

⑦⑫



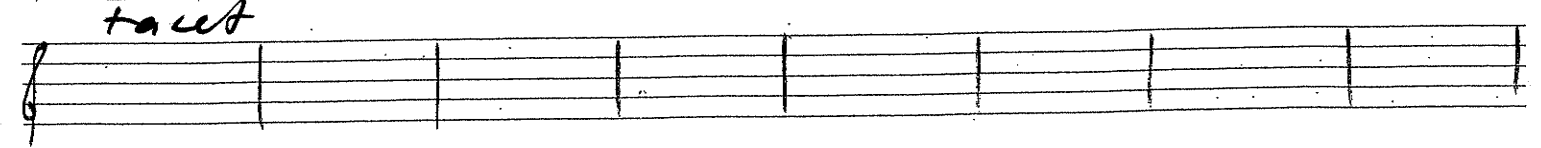
⑦③

Zw.-spiel **tacet**

⑦⑤

⑦⑦

⑦⑨



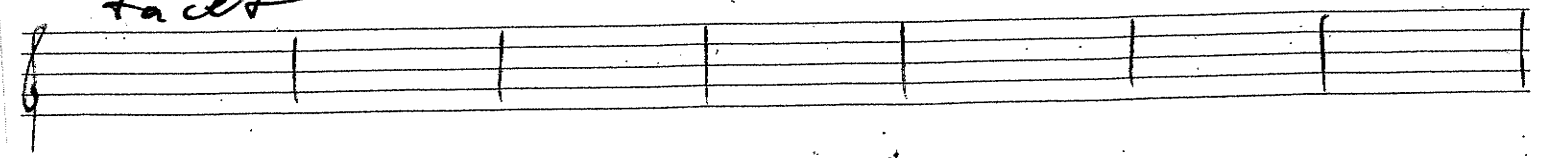
⑧①

**tacet**

⑧③

⑧⑤

⑧⑦



Ref.

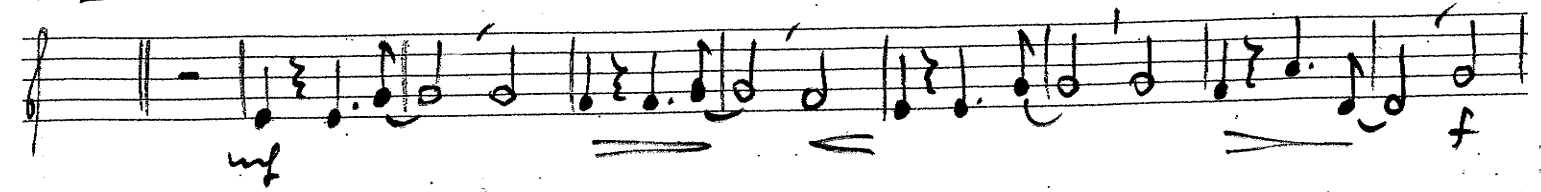
langsam + **accel.**

⑧⑩

⑧⑫

⑧⑭

⑧⑯



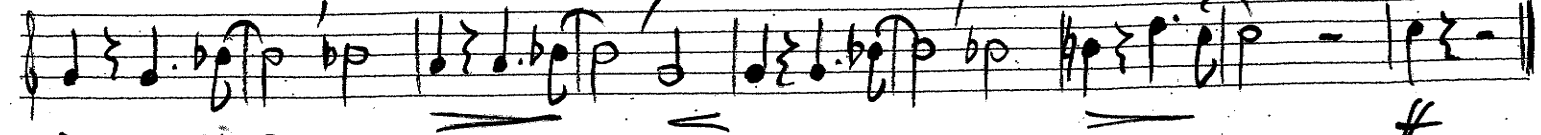
⑧⑰

⑧⑱

⑧⑲

⑧⑲

⑧⑲



♩ -> bis schluß  
↑ ad. lib.

Es lebe die Mode

Tr. II in C

1. 2