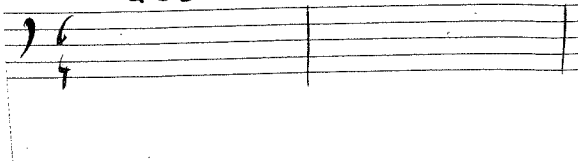


S. 1 Max u. Moritz Lied IIIa (Streich III/1, Holz I/Pfe) „Jedermann im Dorfe kannte“ Bass-Pos. a/b

- Wiegenlied (schneller Walzer) (♩. = 50)
- legg. (weich)
- nicht triolisch

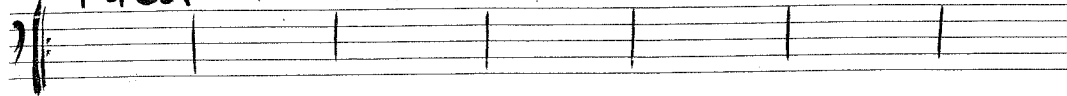
Vorspiel

tacet

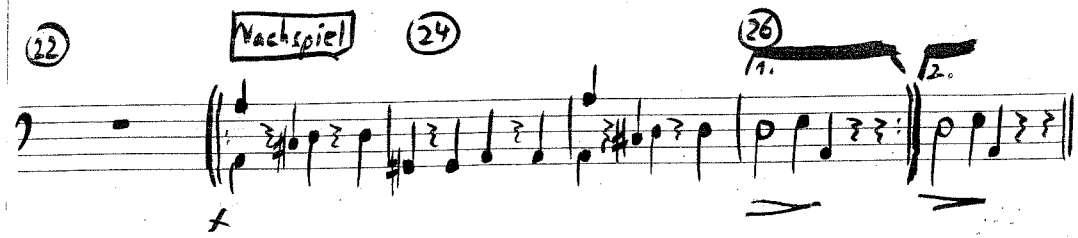
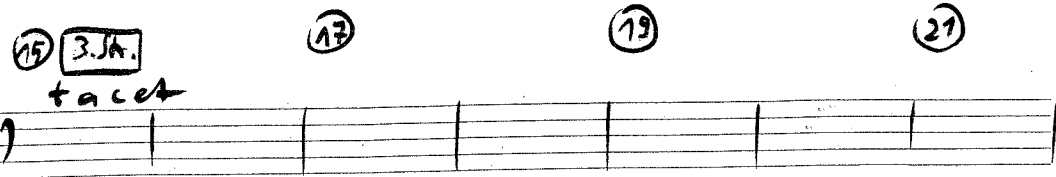


3. 1., 2. Str.

tacet



Max u. Moritz Lied IIIa Bass-Pos. a/b 1.2



S. 1 Max u. Moritz Lied IIIa Bass-Pos. a/b

Max u. Moritz Lied IIIa Bass-Pos. a/b 1.2