

La Plata

G. F. Händel / M. Apitz

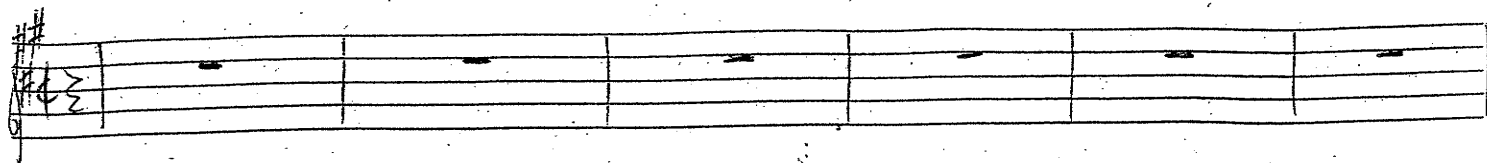
Sax II (Alt - Sax.)

- alles friolisch: ♯♯ u. ♯ = ♯
- alles legg: alles Ungebundene kürzen

2

4

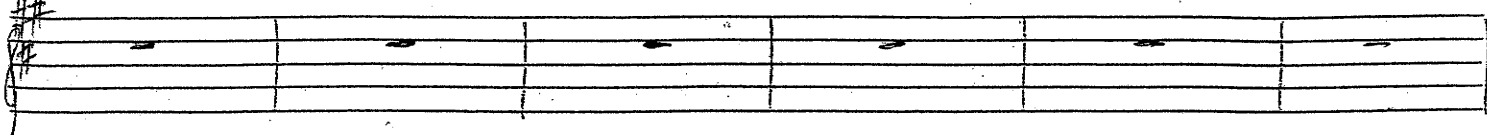
6



7

9

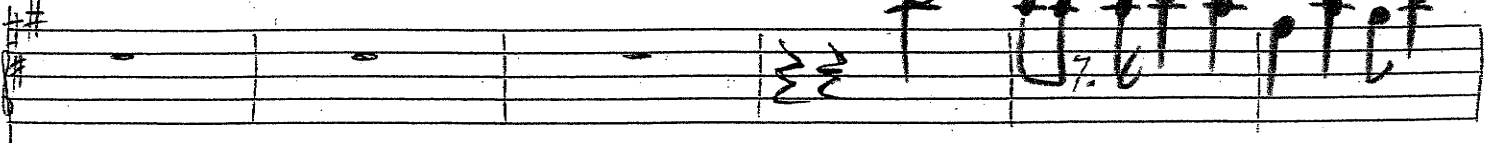
11



13

15

17



f

19

21

23



mf

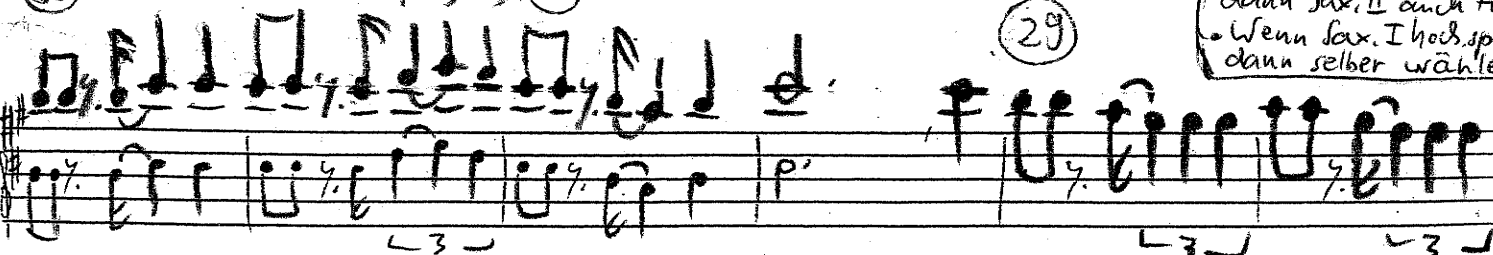
3

ad lib. f

25

27

29



3

3

3

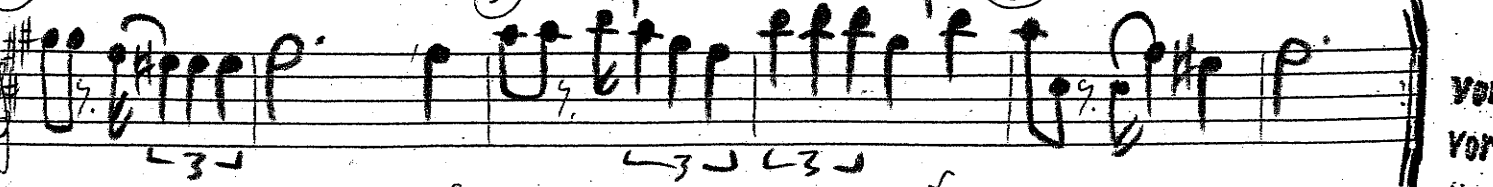
Wenn Sax. I tief spielt
dann Sax. II auch tief!
Wenn Sax. I hoch spielt
dann selber wählen!

dim. — — — — —>

31

33

35



3

3

3

mf

f

Von
Vorn

(bis
T. 36)